

# Products & Services << Easy to Use Products >>

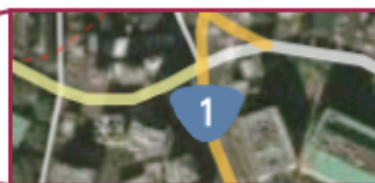
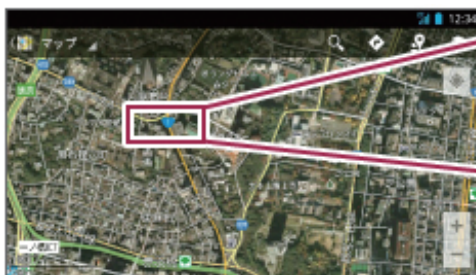
Intuitive Usage, Pre-Touch panel

## Customer Benefits

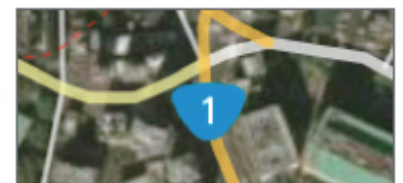
- Users can see contents easily via the automatic colour adjustment based on the users age.
- The optimized and intuitive UI coupled with our proprietary touch panel delivers the ultimate in ease of use.

## Adaptive View

- Automatic colour correction based on users' age. Sensitivity to colour is age dependant. Human's perception of the colour "blue" changes with age. Therefore we adjust Blue to perfectly match the age of the user. Thus we provide easily identifiable colour scheme.



Before: Sensitivity to short wavelength decreases. Visibility is yellowish, blue is difficult to see



After: Emphasizes the blue element by changing the colour scheme for easy identification

## Optimized UI

- We provide an optimized user interface for the mature user. Overcoming any issues they may face when using a Smartphone.

- Clarity
  - Keep it clear and intuitive to use
  - High contrast colours
  - Clear iconography
  - Button colours categorised by function group
  - Large and distinctive front key
- Explore
  - Vertical Home screen gives the users confidence to explore and play

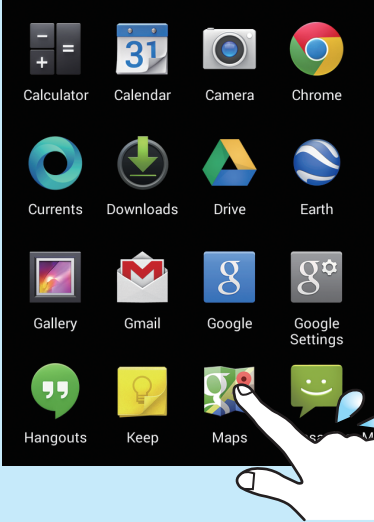
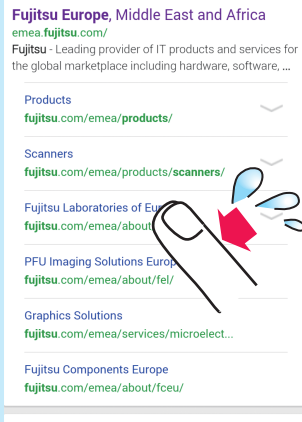


Vertical scrolling makes operation simple and smooth

# Pre-touch panel

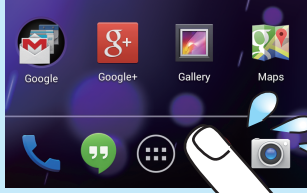
## The current issues of Touch panels

**Reduced ability to control the device: 'flick and scroll'**





**It's difficult to touch the area they want to**

**Touch Panels lack the reassurance of a traditional keypad**



**Unexpected operation**



**"press-and-hold" adds complexity to usage**

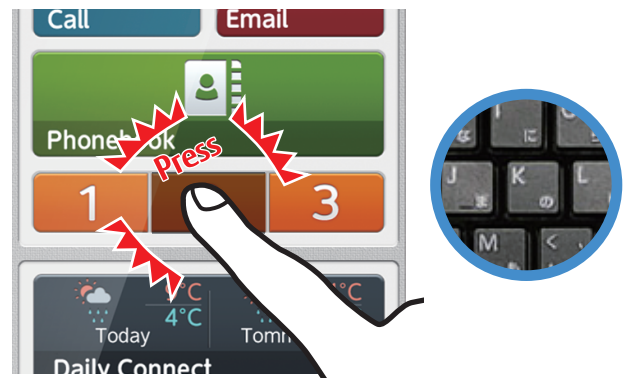



Our proprietary touch panel solves the current issues by simulating the effect of a conventional keypad



### Touch to Confirm

You can visually confirm which button has been pressed.



### Press to Select

Vibration is transmitted to finger and the function starts when firmly pressed like a hard key.

This pamphlet is translated based on the Japanese local pamphlet.  
 Some contents inside are reference information for Japan local only. (Cost/Patent, etc)  
 If you need further information, please contact our sales representative in your region.  
<http://www.fujitsu.com/global/>